



THE ANDY SCRIVEN MEMORIAL
CREW CHIEF MEETING NOTES
VIRGINIA INTERNATIONAL RACEWAY
APRIL 27-29, 2018

From: Race Director: Chip Robinson
Clerk of Course: Pat di Natale
Technical Delegate: Buddy Fey

Practice starts: In front of Race Control – box marked by 4 cones.
Safety Car line 1: At pit entry.
Safety Car line 2: Same as start/finish line.
Access to the circuit: For practice, qualifying and the race is from the pre-grid.

Regulations

Competitors and Drivers are reminded that it is their responsibility to read the 2018 F4 US Championship Sporting Regulations and Event regulations and comply with them.

See Article 24.4 Tires – Cars must start 1st dry qualifying session, on new and unused, declared tires. Rain tires must be re-declared for each event. Pirelli allocates one set of rain tires per car per event. Teams must pre-order additional tires.

See Article 26.7 Transponders

Cars without properly operating transponders will not receive official times. Transponder tester will be available in pit lane.

See Article 29.4 Fuel Handling

Please read and understand.

See Article 42.1 Parc Ferme

Underneath the tech awning is considered part of Parc Ferme.

CRBF4-2018-003 – Article 26.8 – video compliance

In an effort to provide timely decisions, the above video compliance requirements have been developed. Please read and understand fully. Penalties will be issued for out of compliance videos.

Pit Lane – During F4 sessions teams will be working on hot side of pit wall. Tuggers to stage on Pre Grid per grid marshal instructions and will be released by Race Control when pit lane is available.





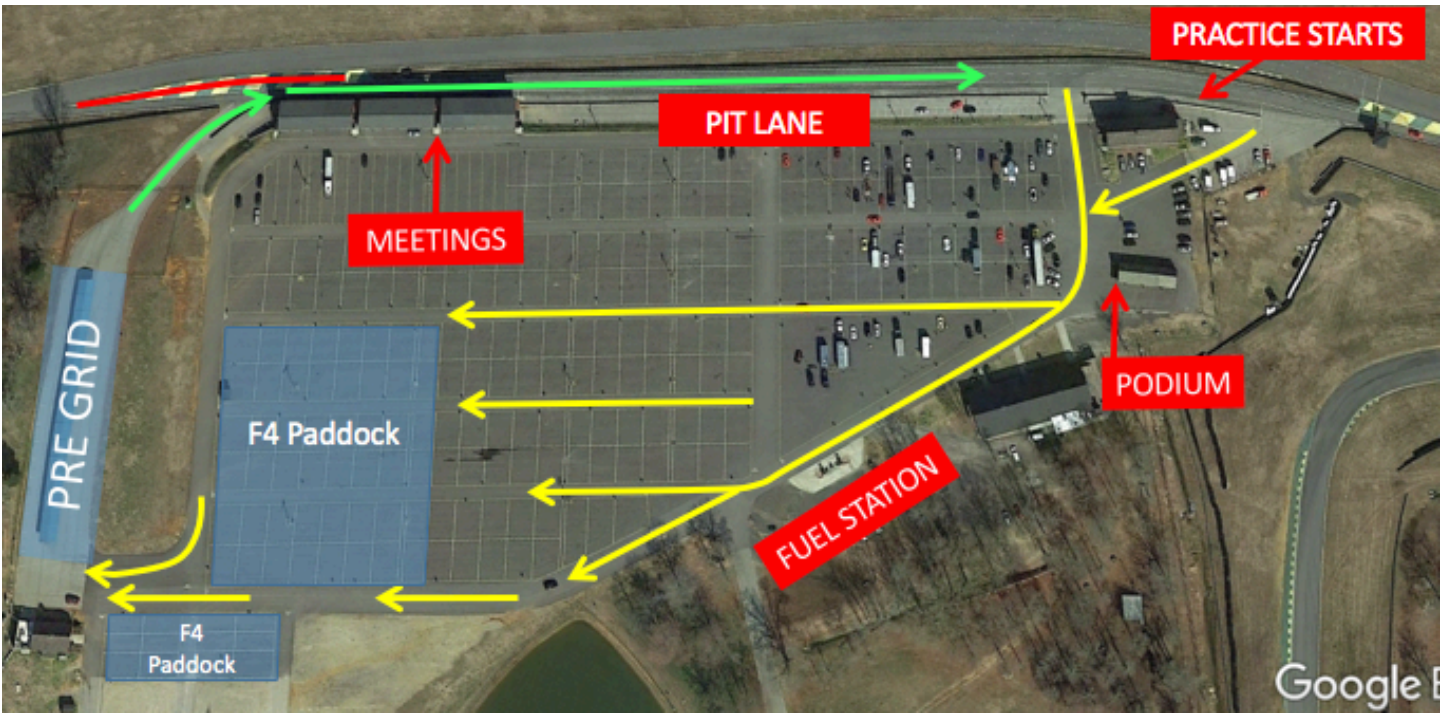
Podium – Top 3 cars to podium. Drivers out and team to move car to tech without delay.

Parc Ferme - Parc Ferme conditions exist when the checkered flag is displayed for qualifying and races. Top 3 cars are to report directly to series tech area. Others required to report to tech area will be informed by Technical Delegate during session. All other cars may return to their paddock area but must not enter their canopy. One crew member may remove video card from camera. No one is permitted to touch cars until after Parc Ferme conditions are lifted.

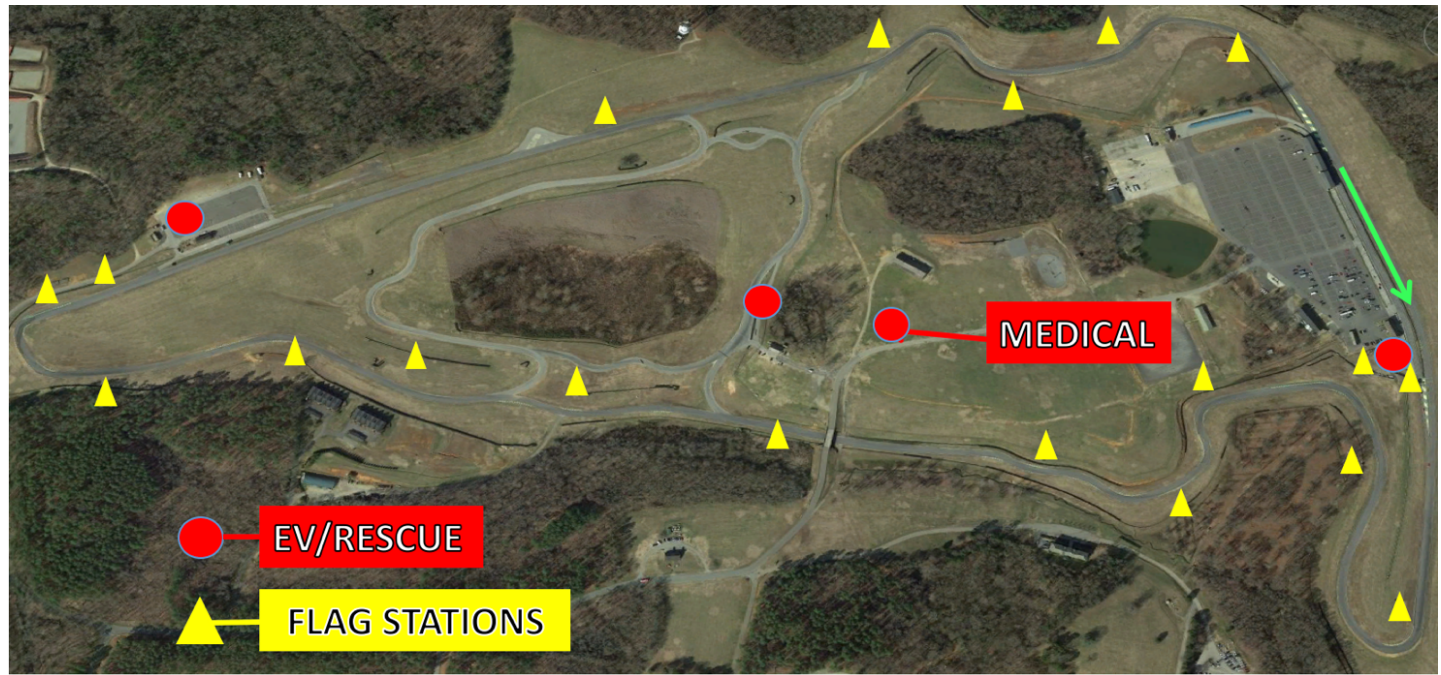
General Notes

- No shorts allowed in pit lane during any official F4/F3 session.
- No smoking or vaping allowed on pit lane at any time.
- If a F4 staff member notifies team of black flag it will be considered the same as displaying such flag.
- No team personnel are permitted at outer pit wall for starts. 1 team member per car is permitted to set car in start box and then return to pit box.
- All spills must be cleaned up or track fines may occur.
- Pit assignments will be distributed at Crew Chief Briefing.
- Official scales and measuring tools are available during the times posted on the schedule, unless closed for Parc Ferme. **Do not drive on scales.**
- After each on track session, teams must monitor Race Control frequency until investigations are announced.

Paddock Plan



Safety Locations



Maps:

